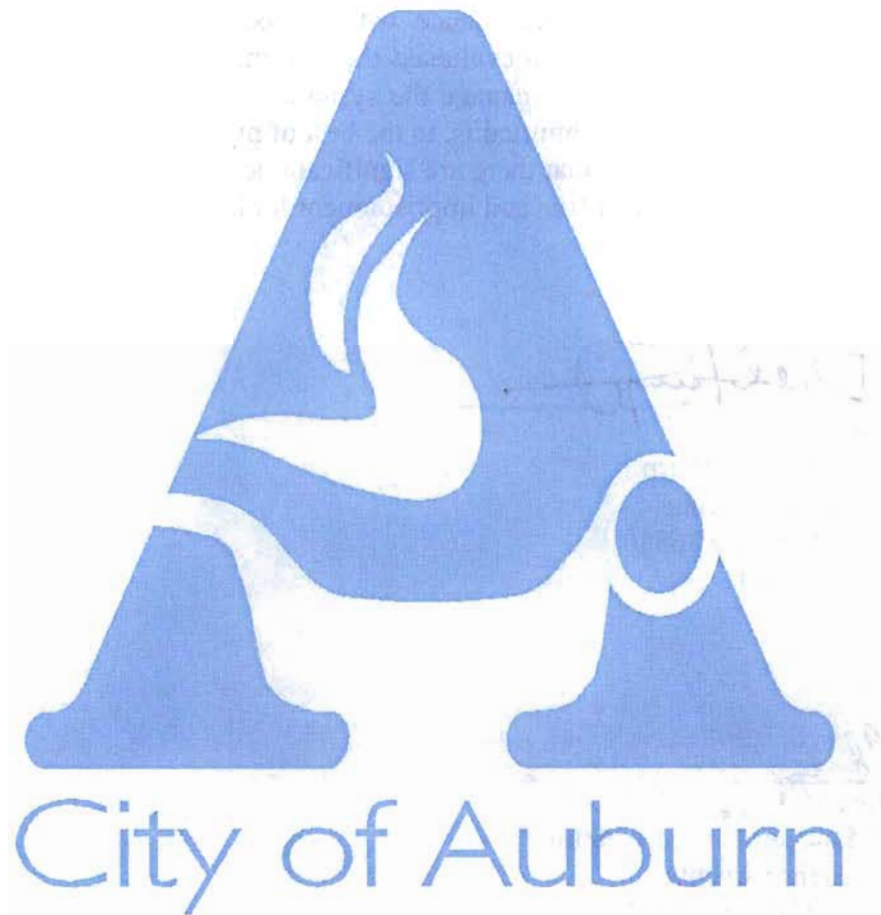

**STORM WATER
MANAGEMENT PROGRAM
ANNUAL REPORT**



PERMIT YEAR FOUR

March 10, 2006 – March 10, 2007

SUBMITTED IN ACCORDANCE WITH THE REQUIREMENTS OF
NATIONAL POLLUTANT DISCHARGE ELIMINATION SYSTEM (NPDES)

PERMIT NUMBER ALR040003

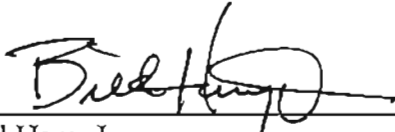
CITY OF AUBURN

NATIONAL POLLUTANT DISCHARGE ELIMINATION SYSTEMS (NPDES)

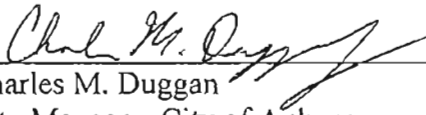
PERMIT NUMBER ALR040003

MUNICIPAL STORM WATER PROGRAM ANNUAL REPORT

I certify under penalty of law that this document and all attachments were prepared under my direction or supervision in accordance with a system designed to assure that qualified personnel properly gathered and evaluated the information submitted. Based on my inquiry of the person or persons who manage the system, or those persons directly responsible for gathering the information submitted is, to the best of my knowledge and belief, true, accurate, and complete. I am aware that there are significant penalties for submitting false information including the possibility of fine and imprisonment for knowing violations.



Bill Ham, Jr.
Mayor, City of Auburn
144 Tichenor Avenue
Auburn, Alabama 36830
(334) 501-7260



Charles M. Duggan
City Manager, City of Auburn
144 Tichenor Avenue
Auburn, Alabama 36830
(334) 501-7260

3/7/07

Date

TABLE OF CONTENTS

I. INTRODUCTION.....	1
II. SITE DESCRIPTION	1
III. KNOWN OR SUSPECTED WATER QUALITY PROBLEMS.....	2
IV. RESPONSIBLE PARTY.....	3
V. STORM WATER MANAGEMENT PROGRAM COMPONENTS	4
VI. PUBLIC EDUCATION AND OUTREACH ON STORM WATER IMPACTS	5
A. <i>Articles in the City News Letter “Open Line”</i>	5
B. <i>Brochure Publications</i>	5
C. <i>Web Site</i>	6
D. <i>Video Presentations/Webcasts</i>	7
E. <i>Public Presentations</i>	7
F. <i>Work Shops Hosted</i>	8
G. <i>Composting & Recycling Center/Compost Demonstration Site</i>	9
H. <i>Streamside Class Room Initiative</i>	10
VII. PUBLIC INVOLVEMENT/PARTICIPATION	11
A. <i>Citizens Advisory Committee</i>	11
B. <i>Watershed Organizations</i>	11
C. <i>City of Auburn Earth Week 2006</i>	12
D. <i>Web Site Hot Line</i>	13
E. <i>Arbor Day Tree Give Away</i>	13
F. <i>City of Auburn Citizen Survey</i>	13
G. <i>Newspaper Articles</i>	14
H. <i>Greenspace/Greenway Master Plan</i>	14
I. <i>Future Land Use Plan</i>	15
J. <i>Lee County Water Festival</i>	15

TABLE OF CONTENTS

VIII. ILLICIT DISCHARGE DETECTION AND ELIMINATION.....	16
A. <i>Storm Sewer Map</i>	16
B. <i>Illicit Discharge Ordinance</i>	16
C. <i>Public Education on Illicit Discharges & Improper Disposal</i>	17
D. <i>Inspection of Drainage System</i>	17
E. <i>Hazardous Waste Emergency Response Team</i>	17
F. <i>Water Sampling Program</i>	17
IX. CONSTRUCTION SITE STORM WATER RUNOFF CONTROL.....	19
A. <i>Erosion and Sediment Control Ordinance</i>	19
B. <i>Erosion Control Checklist</i>	19
C. <i>Erosion Control Residential</i>	20
D. <i>Added Elements to Erosion and Sediment Control</i>	20
E. <i>Rainfall Data Collection</i>	20
X. POST-CONSTRUCTION STORM WATER MANAGEMENT IN NEW DEVELOPMENT AND REDEVELOPMENT.....	21
A. <i>Storm Water Management Manual</i>	21
B. <i>Stream Buffer Regulations</i>	21
C. <i>Detention Pond Inspections</i>	22
D. <i>Right-of-Way Vegetation Program</i>	22
E. <i>Conservation Subdivision Regulations</i>	22
XI. POLLUTION PREVENTION/GOOD HOUSEKEEPING FOR MUNICIPAL OPERATIONS.....	23
A. <i>Construction Site Management Training</i>	23
B. <i>Spill Response and Prevention Training</i>	24
C. <i>Risk Management Manual</i>	24
D. <i>Municipal Operations Recycling</i>	24
E. <i>Street Sweeping</i>	25

TABLE OF CONTENTS

<i>F. Alabama Certified Pesticides Applicator.....</i>	<i>25</i>
XII. STORM WATER INFRASTRUCTURE IMPROVEMENTS	26
<i>A. Storm Water Infrastructure Projects Completed.....</i>	<i>26</i>
<i>B. Storm Water Infrastructure Projects Under Construction.....</i>	<i>26</i>
<i>C. Storm Water Infrastructure Projects Under Design and Consideration.....</i>	<i>27</i>
XIII. PROGRAM EVALUATION.....	28
<i>A. Strengths.....</i>	<i>28</i>
<i>B. Goals for Upcoming Year.....</i>	<i>29</i>

LIST OF APPENDICES

APPENDIX A	ALABAMA NOTICE OF INTENT
APPENDIX B	URBANIZED AREA MAP
APPENDIX C	NEWSPAPER PUBLICATIONS LISTING
APPENDIX D	GREEN SPACE AND GREEN WAY MASTER PLAN
APPENDIX E	FUTURE LAND USE PLAN



STORM WATER MANAGEMENT PROGRAM ANNUAL REPORT

PERMIT YEAR FOUR

March 2006 - March 2007

I. INTRODUCTION

In response to the National Pollutant Discharge Elimination System (NPDES) Phase II Storm Water Regulations, the City of Auburn applied for and received an NPDES permit for storm water discharges.

This report is being submitted to the Alabama Department of Environmental Management (ADEM) pursuant to Part V paragraph C of NPDES Permit ALR 040003 issued on May 14, 2003.

This annual report is the fourth of five for the current permit period and covers the reporting period from March 2006 through March 2007. The program for the current permit period outlined in this report is patterned after the program submitted to and approved by ADEM in March 2003 in the City of Auburn's Alabama Notice of Intent (ALNOI) (Appendix A). The five year permit is expected to expire in March 2008.

II. SITE DESCRIPTION

The City of Auburn is situated in East Central Alabama (Appendix B). The City limits encompass an area of approximately 51 square miles (32,525 acres). This area calculation does not include Auburn University property or the City of Opelika. The population of Auburn is approximately 50,000. There are approximately 117 miles of creeks and streams flowing through Auburn. This is a significant increase from the 56 miles reported in the 2005-2006 report, because it was determined that the total stream miles had been underestimated in previous years. In the 2003-2004 reporting year the storm drainage system contained approximately 86 miles of storm pipe with 4500 inlets and 3000 storm water manholes/junction boxes. The storm water inventory for the 2006-2007 reporting year has not been updated, as the City is currently evaluating options for a system-wide comprehensive update of the City's storm water system. This update was originally scheduled to be completed in 2006 but, due to project difficulties, the City is reevaluating all options for the comprehensive update.

March 2006 – March 2007



STORM WATER MANAGEMENT PROGRAM ANNUAL REPORT

PERMIT YEAR FOUR

March 2006 - March 2007

III. KNOWN OR SUSPECTED WATER QUALITY PROBLEMS

The City of Auburn's storm sewer system discharges into streams located in four primary watersheds, including Saugahatchee Creek (North), Moores Mill Creek (South East), Chewacla Creek (South) and Parkersons Mill Creek (South West).

Moores Mill Creek was placed on the draft 303(d) list in 1998 and was listed on the final 2002 and 2004 303(d) listing. Moores Mill Creek is also listed on the draft 2006 303(d) list. Known water quality concerns within the jurisdictional area were identified as stream siltation resulting from sedimentation deriving from development.

The Saugahatchee Embayment where Saugahatchee Creek discharges into Yates Lake was placed on the State's 303(d) list in 1996, 1998, 2000, 2002 and 2004. The embayment was also placed on the draft 2006 303(d) list. The embayment was listed on the 303(d) list primarily for nutrient enrichment. It is also suspected that sedimentation should be a water quality concern near the embayment.

March 2006 – March 2007

IV. RESPONSIBLE PARTY

The City of Auburn's storm water management program (SWMP) is composed of several programs operating under various departments within the City's organization. Components of the SWMP are managed by various City departments as follows:

- Environmental Services Department – Operates recycling and composting program
- Public Works Department – Performs maintenance of storm water infrastructure and assists with inspections of residential and commercial construction
- Public Safety Department – Monitors residential and commercial construction
- Water Resource Management Department – Monitors residential and commercial construction and manages public education and outreach program

When the City of Auburn began its Phase II program, coordination and implementation of the individual storm water management program was the responsibility of the City's Public Works Department. In October 2005, management of the City's storm water program was moved from the Public Works Department to the City's Water Resource Management Department, under a newly created Watershed Division. The intent of the move was to manage water supply operations, wastewater operations, and storm water operations from a watershed perspective, for all components that impact water quality.

The person responsible for the coordination and implementation of the individual storm water management program components is as follows:

B. Scott Cummings, Director
Water Resource Management Department
City of Auburn
1501 West Samford Avenue
Auburn, AL 36832
(334) 501-3060
scummings@auburnalabama.org

V. STORM WATER MANAGEMENT PROGRAM COMPONENTS

The Phase II storm water regulations require operators of small municipal separate storm sewer systems (MS4s) in urbanized areas to develop and implement storm water management programs employing best management practices (BMPs) to adequately address the six minimum control measures. The control measures include:

- Public Education and Outreach
- Public Involvement/Participation
- Illicit Discharge Detection and Elimination
- Construction Site Storm Runoff Control
- Post-Construction Storm Water Management
- Pollution Prevention/Good Housekeeping for Municipal Operations

In March 2003, the City of Auburn submitted to ADEM a notice of intent (NOI) to implement a storm water management program under the Phase II storm water regulations. The goals of the individual components of the program and implementation dates were outlined in this document. At the end of permit year four, all program components outlined in the NOI have been implemented.

VI. PUBLIC EDUCATION AND OUTREACH ON STORM WATER IMPACTS

A. Articles in the City News Letter Open Line:

Open Line is the City's monthly newsletter mailed to Auburn citizens through their utility bill. Articles and messages contained in the newsletter reach a large and diverse group of citizens. The goal for articles in the City newsletter was to produce two (2) articles per year. During the fourth permit year a total of nine (9) articles were published in which storm water issues were highlighted:



- *Keep Auburn Beautiful Roadside Cleanup Event (March 2006)*
- *Auburn City Fest 2006 (April 2006)*
- *Household Hazardous Waste Collection Day 2006 (April 2006)*
- *Earth Week 2006 (April 2006)*
- *Council Adopts New Stream Buffer Requirements (July 2006)*
- *Celebrate Auburn Recycles Day November 14 (November 2006)*
- *Sewer System Grease and Our Environment (November 2006)*
- *Keep Storm Drains Clear (November 2006)*
- *Stormwater Runoff (December 2006)*

B. Brochure Publications:

Pamphlets and brochures are an effective way to present and explain storm water issues. Unlike other communication vehicles, pamphlets and brochures can be distributed in many locations without requiring staffing and the location of distribution can specifically target the audience you are trying to reach. The goal outlined in the City's NOI was to produce two (2) brochures per year. During the fourth permit year, two (2) brochures were published with a total of six (6) brochures distributed by the City. Brochures provided by the City over the past year include:

Brochures Published by Auburn, Lee County, Opelika and Auburn University (ALOA) Citizen Advisory Group:

- Stream Buffers
- Rain Gardens



March 2006 – March 2007

Clean Water Partnership Brochures Distributed:

- Washing Car
- Changing Oil
- Pets
- Fertilizing



C. Web Site:



Citizens often go to the City's website to obtain information on items of local interest. The web page is accessible 24 hours per day and can serve citizens that do not have the time or the ability to physically meet with staff during normal working hours.

In the NOI submitted to ADEM, the goal was to develop a Phase II Storm Water section on the existing web site in 2003 and post that web page in 2004. This goal was met a year early when the Phase II Storm Water web page was posted in March 2003. City storm water policies, ordinances, design manuals and links to related sites (ADEM and EPA) have been posted and are available to the public.

The City's Storm Water website was moved from the City's Public Works Department home page to the City's Water Resource Management Department home page in 2005. The Storm Water website was updated in 2006 to include additional links, resources, and new photographs.

For more information on the web site please visit:

<http://www.auburnalabama.org/water/phase2stormwater.html>

D. Video Presentations/Webcasts:

Periodically, the City obtains relevant storm water information in video/internet format. The videos are presented to local interest groups and also made available for loan upon request. Videos are typically provided by ADEM, LEGACY, and other non-profit organizations. Webcasts based on stormwater related topics are often hosted by the City. Video/internet media provided by the City over the past year include:

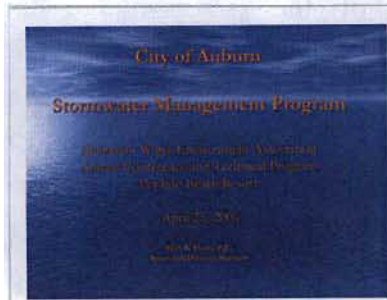
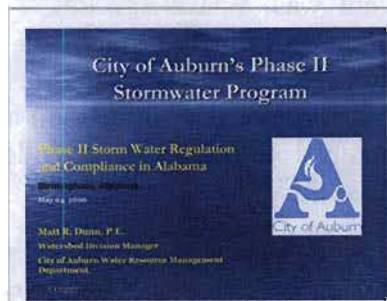
- *LIFE Model for Low Impact Development, CH2M Hill, June 2006*
- *The International Stormwater Best Management Practices Database, Webcast, Center for Transportation and the Environment, November 2006*

E. Public Presentations:

The City provides staff and/or resources to develop presentation materials for public meetings. Typically presentations are offered in PowerPoint format and the topics are chosen by the organization requesting the information.

Seven presentations were made during the fourth permit year. Presentations were given at various workshops and to various groups, including Auburn City Council, the Alabama Water Environment Association, the Lower Tallapoosa Clean Water Partnership, and local contractors, engineers, and developers.

Presentations prepared and provided by City staff over the past year include:



- City of Auburn Stormwater Management Program, Alabama Water Environment Association Annual Conference, Orange Beach, AL (April 2006)
- A Watershed Approach to Water Quality Protection: Stream Buffer Requirements, Lower Tallapoosa Clean Water Partnership, Auburn, AL (May 2006)
- City of Auburn's Phase II Stormwater Program, "Phase II Stormwater Regulations and Compliance in Alabama" Workshop, Birmingham, AL (May 2006)
- City of Auburn's Erosion and Sediment Control Workshop, Local contractors, developers, and engineers (December 2005)

-
- A Watershed Approach to Water Quality Protection: Stream Buffer Requirements, Tallapoosa Steering Committee, Montgomery, AL (June 2006)
 - City of Auburn Erosion and Sediment Control Workshop, Auburn, AL (December 2006)
 - An Overview of Auburn's Stormwater Program, Auburn City Council, Auburn, AL (December 2006)

F. Workshops Hosted:

In an effort to educate contractors, developers, engineers, and staff, the City initiated a series of workshops. The content of the workshops focused on local storm water issues of concern. Workshops hosted by the City over the past year include:

- Red Water Blues Field Day (September 2006) – The City of Auburn participated in and provided volunteers for this annual workshop sponsored by the Alabama Soil and Water Conservation Committee. This year's event held in Auburn was one of two events held in the state in 2006. The purpose of this field day is to educate contractors, engineers, and other professionals on effective erosion and sediment control best management practices (BMPs) through actual field demonstrations on local construction sites. This year's event was held at the Auburn University Research Park and a new subdivision in Auburn. BMP installation demonstrations included erosion control blankets, seeding/mulching alternatives, silt fence installation, inlet protection alternatives, sediment trap installation, etc. Approximately 160 individuals attended the 2006 Field Day, making it one of the most successful Field Days to date.



- Erosion and Sediment Control Workshop (December 14, 2006) – The City of Auburn hosted its fifth annual Erosion and Sediment Control Workshop on December 14, 2006. The purpose of the Workshop is to educate and interact with local engineers, developers and contractors who are governed by the City's Erosion and Sediment Control Ordinance, the Alabama Department of Environmental Management's (ADEM) stormwater regulations, and the United States Army Corps of Engineers (COE) regulations. A



representative from the COE gave a presentation on COE regulations related to wetlands and streams and the types of permitting that are required during certain construction activities. City of Auburn personnel gave an update on the new City of Auburn Stream Buffer Regulations as well as typical maintenance issues that are found during inspections. Davies Erosion Control Services, Inc. and Erosion Control and Environmental Supply, Inc. provided exhibits of proper BMP installation practices as well as new technologies in the erosion and sediment control industry. Over 80 developers, contractors, and engineers attended the workshop.



- Zoning Ordinance and Subdivision Regulations for a Conservation Subdivision (January 2006 – present) – Personnel from a number of City Departments, including Planning, Water Resource Management, Public Works, and Parks and Recreation began work in 2006 to draft a set of regulations for the development of conservation subdivisions. In an effort to protect the City's water supply source, these regulations will support development while protecting natural resources in the Lake Ogletree Watershed. In addition, these regulations could be applied within any watershed in Auburn. Numerous Planning Commission workshops have been held to review and provide comments/suggestions on the regulations.

G. Composting & Recycling Center/Compost Demonstration Site

The City of Auburn has been operating a curbside recycling program since 1987. In addition to curbside recycling, the City maintains a drop-off center for recyclables. The *Recycle Auburn* Drop-Off Center is located across from the Fleet Services Complex at 365-A North Donahue Drive. These operations allow citizens of Auburn to recycle their waste instead of disposing of it in the landfill.

In addition, the City maintains a Compost Demonstration Site that serves as an example of how homeowners can easily incorporate a home composting operation into a normal backyard setting. The site features six backyard compost units. The units range from a simple pile to a concrete bin.



The exhibits take the public through the process of how to compost and recycle materials for garden use and encourage these practices. For more information on recycling of waste, please visit:

<http://www.auburnalabama.org/esd/esd.html>

H. Streamside Class Room Initiative:



In an effort to educate and raise awareness in our community about the need to protect local streams, the City of Auburn, *ALOA* (citizen storm water advisory committee), Save Our Saugahatchee (S.O.S.), and Auburn City Schools have joined together in years past to provide streamside classroom activities.

Sixth graders from local middle schools combine classroom instruction with hands on field activities to conduct water chemistry and biological assessment of a local stream.

Due to inclement weather conditions during the time scheduled for the 2006 Streamside Classroom and the inability to reschedule the event, the Streamside Classroom was not held last year. The involved organizations will plan to conduct this workshop again in 2007.

VII. PUBLIC INVOLVEMENT/PARTICIPATION

A. *Citizens Advisory Committee:*

Both the EPA and ADEM recommend that the public be included in developing, implementing, and reviewing storm water management programs through the establishment of a citizens advisory committee. Communities that allow citizens representing diverse backgrounds and interests to participate in such a committee are far more likely to gain community support through implementation.



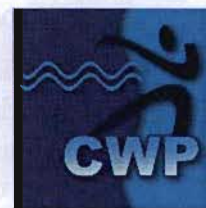
ALOA CITIZENS STORM WATER ADVISORY COMMITTEE (2001-present) - **ALOA** is a Citizens Advisory Committee that serves Auburn, Lee County, Opelika, and Auburn University. It meets on a quarterly basis to review and provide public input to current policies, brochure content, educational material, and proposed ordinances.

In 2006, the ALOA citizens advisory committee produced two brochures. The two brochures produced were titled *Stream Buffers* and *Rain Gardens*. These brochures are available to the citizens of Auburn and can be obtained at City Hall, the Bailey-Alexander Water and Sewer Complex, or by contacting the Watershed Division of the Water Resource Management Department at (334) 501-3077.

B. *Watershed Organizations:*

Regional watershed organizations bring together representatives from utilities, private industry, environmental awareness groups, farmers, and branches of government to coordinate individual efforts, share information, and plan for water resource and aquatic life protection. The regional approach allows participating entities to coordinate individual efforts in order to maximize limited resources.

LOWER TALLAPOOSA RIVER BASIN/CLEAN WATER PARTNERSHIP (2001-present) - The City of Auburn actively participates in the Lower Tallapoosa Clean Water Partnership and on technical sub-committees to assist and guide the development and implementation of a watershed management plan. The organization meets on a quarterly basis. In 2006, as a member of the Clean Water Partnership, the City of Auburn assisted in the planning of a potential rain garden construction site at Eclectic Middle School. The LTCWP received funding for this project from the Alabama CWP.



SAUGAHATCHEE WATERSHED MANAGEMENT PLAN GROUP (SWAMP) - (February 2004 – present) Over the course of the past year, the City of Auburn has actively participated in the SWaMP group along with other stakeholders in the Saugahatchee Creek watershed to begin planning for the implementation of a watershed management plan for the watershed that encompasses parts of Lee, Macon, and Tallapoosa counties. The stakeholder group is made up of representatives from the Cities of Auburn and Opelika, WestPoint Stevens Inc., MeadWestvaco Inc., Save Our Saugahatchee (S.O.S.), the Natural Resources Conservation Service (NRCS), the Alabama Cooperative Extension Service (ACES), the Lower Tallapoosa CWP, and Auburn University. The Plan was finalized and submitted to the ADEM in March 2005. The SWaMP group has held several meetings over the past year to begin planning for the implementation of the watershed management plan. The group hopes to have funding from ADEM for the plan in 2007, at which time implementation for the plan will begin.

C. City of Auburn Earth Week 2006:

Earth Day is a week-long event in the City of Auburn. Over the last several years, City departments have worked to create and implement a week of environmental activities and events aimed at educating citizens of all ages of the importance of protecting our environment. Earth Week 2006 began with activities and story times for local Auburn city school children at the City's public library. The week was rounded out with the City's Annual Household Hazardous Waste Collection Day. This annual event is a favorite among Auburn residents. Each year, the City allows its customers to drop off hazardous household chemicals at a collection site, free of charge. The items are then disposed of in a safe manner, eliminating the possibility of these items being improperly dumped in local creeks and streams. Earth Week activities included:



- Citizen Litter Cleanup Day
- Children creation of bookmarks using dried wild flowers
- Library Puppet Show
- Recycling and Animal Care Workshop
- Educational Activities for 2nd Graders (NRCS-Enviroscape model, Auburn Water Board flocculation experiment, Auburn Animal Control-equipment exhibit, etc.).
- Household Hazardous Waste Collection Day

D. Web Site Hot Line:



In an effort to provide the general public with an additional means of reporting discharges to storm sewers, the City launched the "On-Line Hot Line" in March 2003. Citizens now have the ability to log on to the web site 24 hours a day and provide information on suspected discharges. The information is forwarded to the Water Resource Management Department and an investigation is initiated. The website hot line has proven to be a valuable tool over the course of the past three years by assisting City personnel in responding to citizens concerns.

To report discharges, please visit:

<http://www.auburnalabama.org/water/phase2stormwater.html>

E. Arbor Day Tree Give Away:

The planting of trees improves water quality by reducing storm water runoff and erosion, while facilitating nutrient removal from the storm water runoff. In celebration of Alabama's Arbor Day and to encourage the reforestation of the City's urban landscape, the City's Tree Commission sponsors a tree giveaway. The Commission gave away 500 Redbuds and 500 Nuttall Oaks at the annual Arbor Day Tree Giveaway. The City also gave away 1250 Crabapple trees and 1250 White Oaks at this year's Christmas parade.

F. City of Auburn Citizen Survey:

The citizen survey is an annual survey of a statistical cross section of randomly selected members of the community. The survey asks questions on issues of governmental performance and community priorities and is a means of encouraging citizens to participate in local government. In 2006, the survey contained at least 10 questions that directly impacted storm water quality issues. The questions covered issues such as storm drainage system efficiencies, storm water quality, trash collection, yard waste disposal, recycling, natural resource protection, green space initiatives, and future growth planning. As it relates to stormwater management, approximately 11% of those surveyed were very satisfied, and 46% were satisfied with the City's quality of performance in this area.

To view the Citizen survey, please visit:

<http://www.auburnalabama.org/citizensurvey/default.htm>

G. Newspaper Articles:

Newspaper articles covering local storm water/environmental issues are a means for disseminating information to a large and diverse group of residents most directly impacted by these issues. Informative articles provide the reader with an independent point of view. The reader is not forced to rely on information generated by a single source (i.e. City through the newsletter *Open Line* or brochures).

The City of Auburn is fortunate to have a daily publication. The Opelika-Auburn News is a regional daily newspaper that covers local events and is widely read by residents of Lee County. Approximately thirty (30) articles and editorials were published in the last year that directly dealt with storm water/environmental issues. A listing of articles and publication dates is included in Appendix C of this report.

H. Greenspace/Greenway Master Plan

The Auburn Greenspace Advisory Board (GAB) was created by a City Council resolution in 2002. Its objective was to identify potential areas for future property acquisitions for parks, recreation facility projects, and greenways. Once identified, these properties could be purchased and/or protected from development.

In 2003, the GAB recommended a Greenspace/Greenway Master Plan for the City of Auburn. It was adopted in December 2003 by the City Council and has been utilized by the Planning Commission in connection with approval of projects. The GAB recently revised the initial Plan to include a vast expansion of the proposed greenspace/greenway areas. This first addition to the Greenspace/Greenway Master Plan was adopted by the City Council in October 2004.

This plan has resulted in the acquisition of approximately 300 acres of property located in environmentally sensitive areas. The City is currently working on obtaining easements along Saugahatchee Creek for a proposed greenway project. In addition, approximately 10 acres of land at the entrance of Asheton Park Subdivision and along Saugahatchee Creek was donated to the City for greenspace in 2006. The greenspace/greenway areas include proposed bikeways and trails along existing and new roads and along waterways in the City of Auburn's growth boundary. Areas along waterways may be improved with natural trails and will be preserved by the dedication of conservation easements in developments or the acquisition of property by the City of Auburn. The properties have been set aside for future uses by the City,

as recommended by the GAB. A copy of the current Greenspace/Greenway Master Plan is included in Appendix D of this report.

I. Future Land Use Plan

Due to the pace of development and increase in population within the City of Auburn, City personnel and Auburn citizens have developed a Land Use Plan for future development and growth within the City. The Land Use Plan that was developed focuses on a *City of Villages* concept. This Plan focuses on the concept that natural resource conservation is critical to our quality of life as a part of community planning and development. The plan establishes that residential growth should focus on true neighborhoods that are part of larger “villages”. Villages will contain vital elements to citizens such as grocery stores, retail stores, and greenspaces. In addition, open greenspaces will be linked and tied in to the system of trails and greenspace areas created by the City’s Greenspace/Greenway Master Plan.

The Plan places a strong emphasis on maintaining and enhancing natural resources within the City of Auburn such as streams, greenspaces, and parks. By concentrating populations within these village centers, less automobile traffic is required, impacts on natural resources are lessened, and other adverse environmental effects decrease. The Plan establishes the idea that development should be strategically placed away from our most critical resources. The City began developing new ordinances based on the Land Use Plan in 2005. In addition, the City, through its Planning Department, is contracting with a firm to develop a growth model in 2007 that the City will be able to utilize in making planning decisions within Auburn.

J. Lee County Water Festival

On May 11th-12th, 2006, the third annual Lee County Water Festival was held on the campus of Auburn University. Approximately 1,500 fourth graders from schools in the Lee County area attended the two-day event. The primary purpose of the event is to educate young people on the importance of our water resources and the role each of us plays in conserving our water. During the event, students learned about water filtration, aquifers, and the water cycle through hands-on activities such as building an edible aquifer, making a water cycle bracelet, and building a mini-filtration unit. Volunteers from the City of Auburn, the Auburn Water Works Board, the City of Opelika, and other local groups helped make last year’s event a huge success. Planning is currently underway for the 2007 Water Festival, to be held at Auburn University.



VIII. ILLICIT DISCHARGE DETECTION AND ELIMINATION

A. *Storm Sewer Map:*

The City of Auburn completed the initial mapping of its storm sewer system in 2003. The mapping is maintained in a Geographical Information Systems Database (GIS). The drainage area was divided into quarter section maps with a scale of 1"=100'. Detailed information on pipe size, pipe material, direction of flow, inlets, manholes, bridges, box culverts, detention ponds, and headwalls are provided on the maps. The City is currently evaluating options for a system-wide comprehensive update of the storm water system asset data. This update was originally scheduled to be completed in 2006 but, due to project difficulties, the City is reevaluating all options to complete this effort.



Note: GIS files are updated on a regular basis as new work is added or as old work is modified to current standards. The latest revisions to maps can be obtained through the Public Works Department located at 171 North Ross Street.

B. *Illicit Discharge Ordinance:*

The Environmental Protection Agency (EPA) recommends municipalities implement an ordinance that provides the means to identify and enforce correction of illicit discharges.

In the City's NOI, submitted to ADEM in March 2003, the stated goal was to develop and implement an Illicit Discharge Ordinance by December 2005. This goal was met two years ahead of schedule.

A draft copy of the Illicit Discharge Ordinance was reviewed by the *ALOA* Citizens Advisory Committee in November of 2003. A revised draft was forwarded to the City Attorney and Municipal Judge for review in December 2003. The Auburn City Council adopted the Illicit Discharge Ordinance on January 20, 2004.



The City of Auburn has responded to several cases of illicit discharges over the past year. These cases involved illicit discharges of diesel fuel, concrete washout water, and grease/oil dumping from restaurants. In each instance, the illicit discharge was

traced back to its source and the violator was given a warning and notified of the City's Illicit Discharge Ordinance. The proper regulatory agencies were notified of the issue and proper clean-up was conducted.

C. *Public Education on Illicit Discharges & Improper Disposal:*

The Alabama Clean Water Partnership, in association with ADEM and other environmental groups, has produced a series of public service announcements featuring the "Nerdy Man". The City of Auburn has obtained materials for distribution from the Clean Water Partnership and provides them free to the public through its information centers located at City Hall, the Bailey-Alexander Water and Sewer Complex and the Development Services Building. These materials can also be obtained by contacting the City's Watershed Division at (334) 501-3074. The City also routinely places articles in the City newsletter, *Open Line*, to educate citizens on illicit discharges.

D. *Inspection of Drainage System:*

The City Public Works Department conducts an annual inspection of its drainage system in order to maintain free flowing conditions. During this process, key stream sections, bridges, and culverts are inspected and routine maintenance is conducted. As areas are identified for maintenance, the work is listed on the maintenance schedule and a crew is assigned to perform the task.

E. *Hazardous Waste Emergency Response Team:*

The City of Auburn has entered into an agreement with the City of Opelika to share some of the cost of operating an emergency response vehicle equipped to handle hazardous waste spills. The agreement provides the City of Auburn with the ability to properly identify and address hazardous or potentially hazardous spills (see NOI submittal Appendix B).

F. *Water Sampling Program:*

In 2004, the City of Auburn began a water-sampling program in an effort to analyze the effectiveness of stormwater BMPs on active construction sites within the City. City of Auburn personnel began collecting water samples from Moores Mill Creek, Saughatchee Creek, and Parkersons Mill Creek. In 2006, the City added additional sampling locations on Chewacla Creek, Town Creek, and Choctafaula Creek. These samples are tested for stream turbidity. This data provides an indicator of the effectiveness of construction site BMPs. When excessive increases in turbidity occur downstream from a development, the City



works with the developer to enhance measures to minimize the transport of sediment from the site. The City recently purchased a Hach Hydrolab water quality probe that measures turbidity, pH, temperature, dissolved oxygen, total dissolved solids, and conductivity. This probe can be programmed and launched to collect data continuously in order to obtain real-time pre-, during, and post-wet weather event data. The City's Watershed Division staff is currently preparing a plan that will allow the City to obtain seasonal water quality data using the probe on all of the above-listed streams at strategic locations. The Watershed Division plans to begin collecting extensive data using the probe in 2007.

C. Erosion Control Residential:

The City of Auburn Public Safety Department Codes Enforcement Division conducts an initial site inspection for all building construction in Auburn. Lots requesting the initial inspection must have a construction entrance in place prior to authorizing foundation construction. Deficiencies noted during the initial inspection are relayed to the building permit applicant for correction.

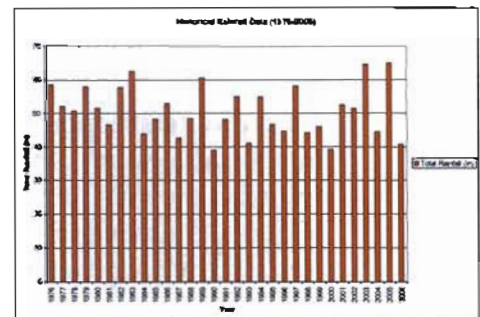
The City of Auburn Public Safety Department Codes Enforcement Division maintains a database of complaints received in association with erosion resulting from residential construction. The complaints are routed to enforcement officers who investigate the complaint and pursue corrective actions with the responsible parties.

D. Added Elements to Erosion and Sediment Control:

In an effort to utilize the latest in erosion and sediment control technology, the City of Auburn has begun recommending that engineers consider the use of polyacrylamide (PAM) and other flocculants on certain developments within the City. PAM is essentially a soil stabilization BMP. Flocculants work to settle solids from turbid water and aid in stabilizing soils to support grass seed so that a suitable vegetative buffer may be established.

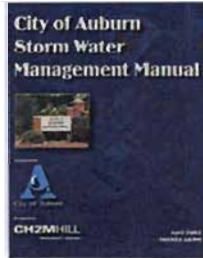
E. Rainfall Data Collection:

In 2005, the City began maintaining historical rainfall data records. The data is obtained through a subscription to the Agricultural Weather Information System (AWIS) website. AWIS records daily weather data from the NOAA weather station at the Auburn-Opelika airport. The City collects the data each day and enters it into an Excel spreadsheet, enabling the City to analyze rainfall patterns and trends. The City has AWIS data dating back to 1976. The Auburn Water Works Board also has rain gauges located at Lake Ogletree and the James Estes Water Treatment Plant that provide daily rainfall records.



X. POST-CONSTRUCTION STORM WATER MANAGEMENT IN NEW DEVELOPMENT AND REDEVELOPMENT

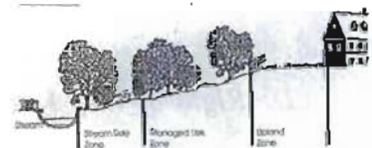
A. Storm Water Management Manual:



In April 2003, the City of Auburn published a Storm Water Design Manual that effectively addresses storm water runoff controls required for sites greater than one acre. The manual identifies project requirements and specifications for new infrastructure and also addresses the requirement for storm water system sizing and storm water runoff control/detention. During its first four years of implementation, the manual has proven to be a very successful tool for the City and developers.

B. Stream Buffer Regulations:

As part of the Erosion and Sediment Control Ordinance adopted by the City Council in July 2002, a minimum 25-foot non-disturbed vegetative buffer zone was required for new developments on “blue line” streams and creeks identified on USGS



7.5 minute topographic maps. In May 2006, the City Council adopted new Stream Buffer regulations. The new buffer regulations are based on a managed-use type buffer rather than a strict non-disturbed buffer approach. The new regulations implement a 3-zoned buffer (streamside zone, managed use zone, and upland zone) with the width of the buffer being based on the drainage area of the stream. A copy of the new regulations can be found on the City’s website.

Drainage Area (Watershed) Designation	Streamside Zone	Managed Use Zone	Upland Zone	Total Buffer Width on each side of Stream
< 100 acres	25 feet	None	10 feet	35 feet
≥ 100 acres	25 feet	None	20 feet	45 feet
≥ 300 acres	25 feet	20 feet	10 feet	55 feet
≥ 640 acres	25 feet	50 feet	25 feet	100 feet

C. Detention Pond Inspections:

Existing detention ponds need periodic inspections to evaluate the maintenance and operation of these vital components of the City's drainage system. Because vast quantities of storm water are collected and passed through these detention ponds every year, inspections of these facilities can identify potential problems and illicit discharges.



The Public Works Department and Water Resource Management Department conduct annual inspections of all detention ponds (public and private) listed in the storm water inventory. Upon inspection, the owner of the pond is notified of any corrective action needed. Enforcement measures are taken if the owner does not address the items listed in the report. Approximately two hundred (200) detention ponds are currently being inspected (January 2007-March 2007).

D. Right-of-Way Vegetation Program:

Proper repair and maintenance of existing rights-of-way provide a significant benefit to storm water quality. The City initiated a program to establish vegetative cover (grass, trees, shrubs, or wildflowers) on rights-of-way where vegetation had previously failed to be established.

E. Conservation Subdivision Regulations:

In 2006, staff members from the City's Planning Department, Water Resource Management Department, Public Works Department, and Parks and Recreation Department began developing conservation subdivision regulations that will aid in the protection of our local water resources. The ordinance and subdivision regulations promote the use of low impact design concepts to protect natural resources in the Auburn area.

XI. POLLUTION PREVENTION/GOOD HOUSEKEEPING FOR MUNICIPAL OPERATIONS

A. Construction Site Management Training:

The City of Auburn continues to develop a training program that provides the Water Resource Management Department and other city departments with information on the proper methods for implementing site control measures on all municipal projects (see Public Education and Outreach on Storm Water Impacts). City personnel also attend a variety of storm water/water quality related workshops/seminars.

Training opportunities included:

- **Alabama's Water Environment Association Annual Conference (April, 2006)** – This 4-day conference sponsored by the Alabama's Water Environment Association membership association of the Water Environment Federation, focuses on storm water, water quality, and wastewater treatment issues. Two (2) City personnel attended this past year's conference, attending technical sessions related to storm water and watershed management, as well as vendor exhibits.
- **Second Annual State of Our Watershed Conference (May 2006)** – This 2-day workshop at Camp ASCCA focused on the current state of the Tallapoosa River Basin watershed, of which the City of Auburn is a stakeholder. Presentations were given on the current water quality status in the watershed as well as ongoing efforts to protect the watershed's water quality. One (1) City personnel attended the conference.
- **American Water Works Association (AWWA) Annual Conference and Exposition 2006 (June, 2006)** – This 4-day annual conference, sponsored by the AWWA, is one of the premier conferences in the world for water treatment and water quality issues. This past year's conference was held in San Antonio, Texas. City personnel attended technical sessions related to water quality and water treatment. Three (3) City personnel attended last year's conference.
- **Stream Restoration in the Southeast: Accomplishments and Success Stories (October 2006)** – This 2.5 day conference held in Charlotte, North Carolina focused on stream restoration and included technical sessions on applications and success stories related to stream restoration. One (1) City personnel attended this past year's event.

-
- **International Storm Water Best Management Practices Database Webcast (November 2006)** – This 2-hour webcast, sponsored by the Center for Transportation and the Environment, gave an overview of the International Storm Water BMP Database website. Applications for using information on the website were discussed. Approximately ten (10) City personnel attended the webcast.
 - **WEFTEC 2006 (October 2006)** – This 4-day conference, sponsored by the Water Environment Federation, is one of the premier water quality conferences in the world. This year's conference was held in Dallas, Texas. City personnel attended technical sessions related to watershed protection, water quality, storm water BMPs, wastewater treatment, etc. Three (3) City personnel attended the conference.
 - **Erosion and Sediment Control Workshop (December, 2006)** – The City of Auburn hosted a workshop for developers, contractors, and engineers to discuss the City's Erosion and Sediment Control Ordinance. Over eighty (80) developers, contractors, engineers, and City personnel attended the workshop.

B. Spill Response and Prevention Training:

As outlined in the NOI, the City of Auburn is developing an in-house spill response training program. The program will be targeted to employees that work on a day-to-day basis with fuels and other potentially hazardous substances. In addition, the ALOA group is developing a brochure in 2007 that will focus on materials handling and safety.

C. Risk Management Manual:

The City of Auburn Human Resources Department has developed a manual outlining specific requirements/policies for dealing with hazardous chemicals. Topic 12 (titled *Hazard Communication Program*) of the City's Risk Management Manual specifically requires City personnel to inventory, label, and receive training on hazardous chemicals identified. Material Safety Data Sheets (MSDS) identifying personal protective equipment, permissible exposure limits (PEL), and Threshold Limit Values (TLV) are required for all hazardous chemicals identified during the inventory process. The Hazard Communication Program was adopted as part of the Risk Management Manual.

D. Municipal Operations Recycling:

It has been standard policy to encourage individual Departments to participate in the City's recycling program. Recyclable waste generated through City activities is

collected and processed through the City's recycling center located on Donahue Drive.

E. Street Sweeping:

The City of Auburn operates a street sweeping program designed to keep trash from entering the storm drainage system. The streets in the City are divided into four (4) grids that are swept on a weekly basis, with the entire route completed at the end of a 4 week period. Local streets or streets with low traffic volumes are swept as needed.

F. Alabama Certified Pesticides Applicator:

The City's Parks and Recreation Department maintains trained and certified personnel in the application of pesticides, including restricted-use pesticides. Although qualified to do so, the Parks and Recreation Department has not employed any restricted-use pesticides in the previous decade. In order to maintain certification with the State of Alabama, the staff must document and complete 30 continuing education units (CEUs) over a three-year period. CEUs are earned at various conferences and workshops such as the Alabama Turfgrass Conference, Alabama Highway Department workshops, Sports Turf Short Course, and the Alabama Urban Forestry Association's Annual Conference. The CEUs cover not only the application of pesticides, they also provide information on the proper use of fertilizers and other chemicals typically used to maintain athletic fields.

XII. STORM WATER INFRASTRUCTURE IMPROVEMENTS

In 2006, the City of Auburn's Public Works Department continued to make considerable progress toward completing a priority listing of storm water improvement projects outlined in the City's Storm Water Master Plan.

A. Storm Water Infrastructure Projects Completed:

Projects completed in permit year four include:

- Thach Avenue Cured In Place Piping (CIPP) Project – Project involved rehabilitating approximately 45 linear feet of 60-inch corrugated metal pipe (CMP) storm drain with CIPP, a 10 foot pipe extension and a new 60-inch headwall.
- East Lane Drainage Improvements Project – Project included the installation of 175 linear feet of 18-inch reinforced concrete storm drain pipe (RCP) and 270 linear feet of 24-inch RCP.
- Bibb Avenue Drainage Improvements Project – Project included the installation of 45 linear feet of 18-inch RCP storm drain and 260 linear feet of 24-inch RCP storm drain.
- Tucker/Foster Drainage Improvements Project – Project included the installation of 92 linear feet of 30-inch RCP storm drain.
- East Magnolia CIPP Project – Project involved the rehabilitation of 505 linear feet of 24-inch RCP storm drain with CIPP.
- West Glenn CIPP Project – Project involved the rehabilitation of 45 linear feet of 24-inch RCP storm drain with CIPP.
- Cary Drive CIPP Project – Project involved the rehabilitation of 40 linear feet of 15-inch CMP storm drain with CIPP.

B. Storm Water Infrastructure Projects Under Construction:

Projects currently under construction include:

- Country Circle Drainage Improvements Project – Project will consist of the installation of 750 linear feet of 24-inch RCP storm drain.

C. Storm Water Infrastructure Projects Under Design and Consideration:

- Veterans Drive Extension Drainage Improvements – Conceptual designs include upsizing 40 linear feet of 18-inch RCP, 780 linear feet of 24-inch RCP, 210 linear feet of 36-inch RCP, and 400 linear feet of 48-inch RCP storm drain, and/or construction of upstream detention ponds.
- South Donahue Drive Drainage Improvements – Project will consist of installing 50 linear feet of 36-inch RCP storm drain.
- West Glenn at Toomer Street Drainage Improvements – Project will consist of upgrading an existing 30-inch RCP storm drain to a 42-inch RCP storm drain.
- Brenda Avenue Pipe Rehab – Project will involve the rehabilitation of 250 linear feet of 18-inch RCP storm drain with CIPP.
- Hollon Avenue Pipe Rehab – Project will involve the rehabilitation of 50 linear feet of 24-inch RCP storm drain with CIPP.

XIII. PROGRAM EVALUATION

Now in its fourth permit year, the City of Auburn's Storm Water Management Program continues to have a positive impact on storm water management in the City. The goals outlined in the City's Notice of Intent have been achieved.

The City of Auburn has strengthened requirements of its construction storm water management program by empowering staff to issue citations and/or stop work orders in cases where Best Management Practices (BMPs) are not implemented or deemed deficient. The City has implemented a water sampling program so that the effectiveness of storm water BMPs on active construction sites may be analyzed. This program also allows staff to examine local streams from a water quality perspective. The City has recently purchased a Water Quality Probe that will allow City staff to conduct more in-depth water quality analyses of local watersheds in an effort to monitor certain water quality parameters. The City continues to invest staff time and money into the continuing education and outreach and public involvement associated with the Storm Water Management Program. The City has met or exceeded its goals for this year.

The overall evaluation of the fourth permit year has revealed several strengths and goals for the upcoming year.

A. Strengths

Identified strengths of the program include the commitment and support of Auburn's City Council in protecting local natural resources as demonstrated in the formation of the Watershed Division in the Water Resource Management Department to manage the City's storm water program, increased enforcement of erosion and sediment control requirements, and increased efforts to evaluate water quality. The City of Auburn also actively engages local environmental groups, concerned citizens, and the local development community to evaluate programs and develop new standards. Other strengths include:

- The Water Resource Management Department coordinates all of the City's water quality programs (water treatment and distribution, wastewater collection and treatment, and storm water management).

-
- Teamwork of the City's Water Resource Management Department Watershed Division, Public Works Department Inspection Division and Public Safety Department Codes Enforcement Division in the City's construction storm water management program.
 - A well established but growing water quality sampling program to evaluate stream conditions and storm water outfalls.
 - Community awareness and stakeholder involvement
 - Proactive evaluation and rapid response to water quality-related issues
 - Public education and outreach

B. Goals for the Upcoming Year

The City of Auburn takes pride in its Storm Water Management Program and feels as though the efforts that have been made over the past four years have created a strong, viable, and long-lasting program for the City that will have positive impacts on the City's natural resources. As the City strives to make its program even better, several program goals have been identified for the upcoming year by City personnel. These goals include:

- Increased public education and awareness on illicit discharges
- Increased education and awareness of the community on the City's roles and responsibilities with the Storm Water Management Program
- Increased focus on our water sampling program
- Increased education of homebuilders on proper best management practices during construction

APPENDIX A

ALABAMA NOTICE OF INTENT (ALNOI)

City of Auburn

Alabama Notice of Intent (ALNOI)

General permit for Phase II Small Municipal Separate Storm Sewer Systems (MS4)

March 2003

TABLE OF CONTENTS

I.	General Information:	1
II.	Location/Boundaries:	1
III.	Known or Suspected Water Quality Problems:	2
IV.	Sharing Responsibility	2
V.	Minimum Control Measures:	3
VI.	Certification Statement	3

Appendix A - Public Education and Outreach on Storm Water Impacts

Appendix B - Public Involvement/Participation

Appendix C - Illicit Discharge Detection and Elimination

Appendix D - Construction Site Storm Water Runoff Control

Appendix E - Post-construction Storm Water Management in

New Development and Redevelopment

Appendix F - Pollution Prevention/Good Housekeeping for Municipal Operations

Appendix G - City of Auburn Location Map

Appendix H - Lee County Emergency Operations Plan

Emergency Support Function #10 Hazardous Materials

Appendix I - Master Drainage Map & Quarter Section Map Example

Appendix J - ALOA Erosion and Sediment Control Policy

Appendix K - City of Auburn Storm Water Management Manual

STATE OF ALABAMA DEPARTMENT OF ENVIRONMENTAL MANAGEMENT

ALABAMA NOTICE OF INTENT (ALNOI)

General Permit for Phase II Small Municipal Separate Storm Sewer Systems (MS4)

I. General Information:

A. Ownership Status (Please check one):

- Small Municipal Separate Storm Sewer System
 Federal Facility
 State Facility

B. Name of Small MS4: ***The City of Auburn***

C. Name of Responsible Official: ***Bill Ham, Jr.***

Title: ***Mayor***

Mailing Address: ***144 Tichenor Avenue***

City: ***Auburn*** State: ***AL*** Zip Code: ***36832***

Telephone Number: ***(334) 501 - 7260***

D. Designated storm water management program contact:

Name: ***Tim Logiotatos***

Title: ***Assistant City Engineer/Environmental***

Mailing Address: ***171 North Ross Street***

City: ***Auburn*** State: ***AL*** Zip Code: ***36832***

Telephone Number: ***(334) 501 - 3000***

Email Address: ***tlogiotatos@auburnalabama.org***

II. Location/Boundaries:

A. Location:

1. Name of Urbanized Area or municipality where your MS4 is located:

Auburn, AL

2. Name of your

Organization: ***The City of Auburn***

3. The latitude and longitude of the approximate center of your MS4:

Latitude ***764440.25*** Longitude ***766458.96***

Note: *Approximate center of MS4 is the intersection of Magnolia Avenue and College Street. Latitude and Longitude are in State Plane Coordinate System.*

4. All entities except counties must include a location map showing city, town, or district boundaries, and urbanized area (UA) boundaries, if part(s) of the MS4 is within a UA.

See Appendix G

5. Counties must include a map showing county boundaries, unincorporated area boundaries within the county, and urbanized (UA) boundaries.

III. Known or Suspected Water Quality Problems:

- A. The names(s) of the receiving water to which your MS4 discharges (attach a separate list if necessary):

The City of Auburn discharges into Sogauhatchee Creek (North), Moores Mill Creek (south East), Chewacla Creek (south) and Parkersons Mill Creek (South West).

- B. Indicate any receiving water stream segments to which your MS4 discharges, which are included on the 303(d) list:

Moores Mill Creek was placed on the draft 303(d) list in 1998 and was listed on the final 2002 303(d) list.

- C. Describe any known or suspected water quality concerns within your jurisdictional area (e.g. stream siltation, 303(d) listed streams, habitat degradation, elevated levels of pollutants, etc.), including location (attach additional page(s) if necessary):

Stream siltation and sedimentation derived from development are the known water quality concerns within the jurisdictional area.

IV. Sharing Responsibility

- A. Has another entity agreed to implement a control measure on your behalf?
Yes No (if no, Skip to Part III)

Control Measure #1: *Illicit Discharge Detection and Elimination*

1. Name of entity: ***The City of Opelika***
2. Control measure or component of control measure to be implemented by entity on your behalf:

The City of Auburn has entered into an agreement with the City of Opelika to share some of the cost of operating an emergency response vehicle equipped to handle hazardous waste spills. The agreement provides the City of Auburn with the ability to properly

identify and address hazardous or potentially hazardous spills (see Appendix H).

- B. Attach an additional page if necessary to list additional shared responsibilities.

It is mandatory that you submit a copy of a written agreement between your MS4 and the other entity demonstrating written acceptance of responsibility.

V. Minimum Control Measures:

- A. Public Education and Outreach – (complete Appendix A)
- B. Public Involvement/Participation – (complete Appendix B)
- C. Illicit Discharge Detection and Elimination – (complete Appendix C)
- D. Construction Site Storm Water Runoff Control – (refer to Appendix D)
- E. Post-construction Storm Water Management in New Development and Redevelopment – (complete Appendix E)
- F. Pollution Prevention/Good Housekeeping – (complete Appendix F)

VI. Certification Statement

I certify under penalty of law that this document and all attachments were prepared under my direction or supervision in accordance with a system designed to assure that qualified personnel properly gathered and evaluated the information submitted. Based upon my inquiry of the person or persons who manage the system, or those persons directly responsible for gathering the information, the information submitted is, to the best of my knowledge and belief, true, accurate and complete. I am aware that there are significant penalties for submitting false information, including the possibility of fine and imprisonment for knowing violations.

Printed Name: _____ Date _____
Signature: _____ Title _____

Appendix A

Public Education and Outreach on Storm Water Impacts

40 CFR Part 122.34(b)(1) Requirement: You must implement a public education program to distribute educational materials to the community or conduct equivalent outreach activities about the impacts of storm water discharges on water bodies and the steps that the public can take to reduce pollutants in storm water runoff.

A. Best Management Practice (BMP) # 1: Messages/Articles in City News Letter "Open Line"

1. Known or suspected problem/existing pollutant source to be addressed by BMP: **Storm Water Runoff**
2. Target audience: **Citizens**
3. Description of BMP: **Messages/Articles in the City News Letter "Open Line"**
4. Measurable Goal(s): **Two Messages/Articles per year for duration of permit period**
5. Schedule:
 - a. Interim Milestone Dates (if applicable)
 - b. Implementation Date: **2003**
 - c. Frequency of actions: **Bi-annual**
 - d. Month/Year of each action (if applicable)
6. Person (position) responsible for overall management and implementation of the BMP: **Tim Logiotatos/Public Works Department**
7. Rational for selecting this BMP:

"Open Line" is the City's news letter that is sent out through the utility bill. No other publication is as widely read within the City Limits and an article or message in this document will reach the most diverse group of citizens.

B. Best Management Practice (BMP) # 2: Pamphlets/Brochures

1. Known or suspected problem/existing pollutant source to be addressed by BMP: **Storm Water Runoff/Quality**
2. Target audience: **Citizens, Contractors, Developers, and Engineers**
3. Description of BMP: **Pamphlets and Brochures**
4. Measurable Goal(s): **Develop, Produce, and Distribute two Pamphlets/Brochures per year for duration of Permit Period**
5. Schedule:
 - a. Interim Milestone Dates (if applicable)
 - b. Implementation Date: **2003**
 - c. Frequency of actions: **Bi-annual**
 - d. Month/Year of each action (if applicable)
6. Person (position) responsible for overall management and implementation of the BMP: **Tim Logiotatos/Public Works Department**
7. Rational for selecting this BMP:

Pamphlets and brochures are an effective way to present and explain a storm water message. Unlike other communication vehicles, pamphlets and brochures can be distributed in many places without requiring staffing and the location of distribution can specifically target the audience you are trying to reach (i.e. Development Services Building/Office of Codes and Enforcement).

C. Best Management Practice (BMP) # 3: Internet Web Page

1. Known or suspected problem/existing pollutant source to be addressed by BMP: ***Storm Water Construction Runoff/Storm Water Quality***
2. Target audience: ***Community***
3. Description of BMP: ***Municipal Web Page***
4. Measurable Goal(s): ***Develop and post web page containing storm water information and links.***
5. Schedule:
 - a. Interim Milestone Dates: ***Develop Web Page 2003***
 - b. Implementation Date: ***Post Web Page 2004***
 - c. Frequency of actions: (if applicable)
 - d. Month/Year of each action (if applicable)
6. Person (position) responsible for overall management and implementation of the BMP: ***Tim Logiotatos/Public Works Department***
7. Rational for selecting this BMP:

The City's web page is a place where citizens often go to obtain information on local events. A section of the web page can be modified to target various audiences (contractors, engineers, local interest groups, etc.). It also allows the City to link to existing web sites (i.e. ADEM and EPA) for the latest educational information provided by these agencies for our use.

Note: The MS4 is not limited to implementing only 2 BMPs for each minimum control measure. If additional BMPs are chosen, then you should attach additional sheets as needed.

Appendix B

Public Involvement/Participation

40 CFR Part 122.34(b)(2) Requirement: You must, at a minimum, comply with State, Tribal, and local public notice requirements when implementing a public involvement/participation program.

A. Best Management Practice (BMP) # 1: Formation of a Citizens Advisory Committee

1. Known or suspected problem/existing pollutant source to be addressed by BMP: **Storm Water Runoff/Quality**
2. Target audience: **Community**
3. Description of BMP: **Formation of a Citizens Advisory Committee**
4. Measurable Goal(s): **Organize a regional Citizens Advisory Committee representing various segments of the community to offer recommendations to facilitate implementation of the Storm Water Management Program. Regional representatives include members City of Auburn, Lee County, City of Opelika, and Auburn University.**
5. Schedule:
 - a. Interim Milestone Dates (if applicable)
 - b. Implementation Date: **The ALOA Citizens Advisory Committee was organized in 2001. It is comprised of various segments of the community including local environmental interest groups.**
 - c. Frequency of actions: **The ALOA Citizens Advisory Committee meets on a quarterly basis.**
 - d. Month/Year of each action: **The ALOA Citizens Advisory Committee is scheduled to meet on a quarterly basis for the duration of the permit period (5 years).**
6. Person (position) responsible for overall management and implementation of the BMP: **All members of ALOA (City of Auburn, Lee County, City of Opelika, and Auburn University) are committed to fostering and maintaining the organization.**
7. Rational for selecting this BMP:
EPA and ADEM recommend that the public be included in developing, implementing, and reviewing storm water management

programs. This committee allows individuals to participate in the discussions regarding program implementation. The committee also has direct input into policy implementation for regional storm water issues.

B. Best Management Practice (BMP) # 2: Watershed Organization “Lower Tallapoosa River Basin/Clean Water Partnership”

1. Known or suspected problem/existing pollutant source to be addressed by BMP: **Storm Water Runoff/ Quality**
2. Target audience: **Community**
3. Description of BMP: **The partnership is part of a state-wide river basin management initiative to link local basin management efforts in order to maximize resources, to develop comprehensive management plans, and to involve citizens in watershed protection.**
4. Measurable Goal(s): **Coordinate with the Clean Water Partnership to develop a watershed management plan. Work with the Clean Water Partnership’s and ADEM’s Education/Outreach initiative to improve awareness of water quality issues.**
5. Schedule:
 - a. Interim Milestone Dates (if applicable)
 - b. Implementation Date: **The City of Auburn is currently a participant on the Lower Tallapoosa Technical Committee.**
 - c. Frequency of actions: **Meetings are held on a quarterly basis.**
 - d. Month/Year of each action (if applicable)
6. Person (position) responsible for overall management and implementation of the BMP: **Tim Logiotatos/Public Works Department**
7. Rational for selecting this BMP:
The Partnership brings together representatives from utilities, private industries, environmental groups, farmers, and branches of government to coordinate their individual efforts, share information, and plan for water resource and aquatic life protection. This organization allows for the group to maximize resources available and to involve the public in protecting the environment.

Note: The MS4 is not limited to implementing only 2 BMPs for each minimum control measure. If additional BMPs are chosen, then you should attach additional sheets as needed.

Appendix C

Illicit Discharge Detection and Elimination

40 CFR Part 122.34(b)(3) Requirement: You must develop, implement and enforce a program to detect and eliminate illicit discharges into you small MS4. You must:

- A). Develop, if not already completed, a storm sewer system map, showing the location of all outfalls and the names and location of all waters of the state that receive discharges from those outfalls;
- B). Effectively prohibit, through ordinance, or other regulatory mechanism, non-storm water discharges into your storm sewer system and implement appropriate enforcement procedures and actions;
- C). Develop and implement a plan to detect and address non-storm water discharges, including illegal dumping, to your system; and
- D). Inform public employees, businesses, and the general public of hazards associated with illegal discharges and improper disposal of waste.

A. Storm Sewer Map

- 1. Does the MS4 have a completed storm sewer map showing the location of all outfalls and the names and locations of all waters of the State that receive discharges from those outfalls? Yes X No ___
- 2. If yes submit storm sewer system map as an addendum to this form.

The City of Auburn has mapped its storm water system in a Geographical Information Systems Database (GIS). The attached 27" x 36" drainage map is a hard copy depiction of the entire system and its outfalls. Detail information on pipe size, pipe material, direction of flow, inlets, manholes, bridges, box culverts, detention ponds, and headwalls are provided on quarter section maps. Quarter section maps (1"=100' scale) allow the space necessary to illustrate these details without clutter. In Attachment I please find: a hard copy (27" x 36") Master Drainage Map, an example of one of the 36" x 36" quarter section maps, and the electronic files for the Master Drainage Map and all of the approximately 120 quarter section detail maps for your review.

Note: GIS files are updated on a daily basis as new work is added or as old work is modified to current standards. Latest revision to Maps can be obtained through the Public Works Department located at 171 North Ross Street.

3. If the storm sewer system map must be developed, provide a schedule for completion (e.g. 30% of system to be mapped each year):

<u>Task</u>	<u>Interim Date</u>
_____	_____
_____	_____
_____	_____

Final completion date/ date for submittal to ADEM (No later than December 9, 2006): _____

B. Ordinance/Regulatory Mechanism Evaluation:

1. Does the MS4 have an ordinance or regulatory mechanism that effectively prohibits illicit discharges? Yes _____ No **X**

If yes, submit a copy as an addendum to this form.

2. If an evaluation of the ordinance/regulatory mechanism must be completed, or the MS4 is aware that the ordinance/regulatory mechanism will require revision, then a schedule for development of the document should be provided:

<u>Task</u>	<u>Interim Date</u>
<u>Review Ordinance Material</u>	<u>Dec 9 2003</u>
<u>Draft Ordinance</u>	<u>Dec 9 2004</u>
<u>Adopt Ordinance</u>	<u>Dec 9 2005</u>

Final completion date/ date for submittal to ADEM (No later than December 9, 2006): _____

C. **Best Management Practice (BMP) # 1: Public Education on Illicit Discharges & Improper Disposal**

1. Known or suspected problem/existing pollutant source to be addressed by BMP: **Storm Water Discharges**
2. Target audience: Citizens
3. Description of BMP: ***The Clean Water Partnership in association with ADEM and other environmental groups have produced a series of public service announcements featuring the "Nerdy Man". These spots inform the public of the do's and don'ts of proper disposal.***
4. Measurable Goal(s): ***Coordinate with Clean Water Partnership to obtain public service announcements and videos (e.g. "The Nerdy Man" videos) for public use locally.***
5. Schedule:
 - a. Interim Milestone Dates (if applicable)
 - b. Implementation Date: **Dec 9 2003**
 - c. Frequency of actions: ***Provide public access to information and materials year round***
 - d. Month/Year of each action (if applicable)
6. Person (position) responsible for overall management and implementation of the BMP: **Tim Logiotatos/ Public Works Department**
7. Rational for selecting this BMP:

The Clean Water Partnership provides the videos and training materials in an effort to educate the public. Use of the videos and other materials allows the city to provide education that could prevent an illicit discharge (like proper disposal of oil). The materials have been produced through the assistance of various environmental agencies and are geared toward the general public.

D. Best Management Practice (BMP) # 2: Inspection of Drainage System

1. Known or suspected problem/existing pollutant source to be addressed by BMP: **Storm Water Runoff/Quality**
2. Target audience: **Public Works**
3. Description of BMP: **Inspect drainage system and outfalls**
4. Measurable Goal(s): **Inspect drainage system and outfalls prior to start of rainy season. Document illicit discharges uncovered during inspections and schedule for remediation.**
5. Schedule:
 - a. Interim Milestone Dates (if applicable)
 - b. Implementation Date: **Dec 5 2001**
 - c. Frequency of actions: **Annually**
 - d. Month/Year of each action: **November - February**
6. Person (position) responsible for overall management and implementation of the BMP: **Robert Smith/Assistant Public Works Director**
7. Rational for selecting this BMP:

Annual inspections of the City's drainage system are conducted in order to maintain free flowing conditions. During this process, key stream sections, bridges, and culverts are inspected and routine maintenance is conducted. Routine maintenance includes repair of the structure and/or removing litter and debris that has accumulated over the preceding year. The removal and inspection of debris from these catch points can provide the City with valuable information locating, premeditating, and eliminating illicit discharges.

Note: The MS4 is not limited to implementing only 2 BMPs for each minimum control measure. If additional BMPs are chosen, then you should attach additional sheets as needed.

Appendix D

Construction Site Storm Water Runoff Control

ADEM Admin. Code Ch. 335-6-12 implements a State-wide construction storm water regulatory program consistent with NPDES requirements for construction activities. As provided by 40 CFR Part 122.35(b), this NOI does not require an MS4 to implement a local construction storm water control program.

The City of Auburn in conjunction with the City of Opelika and Auburn University has adopted the Erosion and Sediment Control recommended to it by the Citizens Advisory Committee (ALOA). The implementation of this regional Policy began in July 2002 (See Appendix J).

Appendix E

**Post-construction Storm Water Management in
New Development and Redevelopment**

40 CFR Part 122.34(b)(5) Requirement: You must develop, implement, and enforce a program to address storm water runoff from new development and redevelopment projects that disturb greater than or equal to one acre, including projects less than one acre that are part of a larger common plan of development or sale, that discharge into your small MS4. You must:

- A). Develop and implement strategies which include a combination of structural and/or non-structural BMPs appropriate for you community.
- B). Use an ordinance or other regulatory mechanism to address post construction runoff from new development or redevelopment projects; and
- C). Ensure adequate long-term operation and maintenance of BMPs.

A. Ordinance Evaluation

1. Does the MS4 have an ordinance that effectively controls runoff from new development or redevelopment construction site?

Yes X No

If yes, submit a copy as an addendum to this form.

The City of Auburn has developed an Engineering Design Manual that effectively addresses storm water runoff controls required for sites greater than one acre. The manual specifically addresses the requirement for storm water system sizing and storm water runoff control/detention (see Attachment K).

2. If an evaluation of the ordinance must be completed, or the MS4 is aware that the ordinance will require revision, then a schedule for development of the document should be provided:

<u>Task</u>	<u>Interim Date</u>
_____	_____
_____	_____
_____	_____

Final completion date/ date for submittal to ADEM (No later than December 9, 2006): _____

B. Best Management Practice (BMP) #1: Buffer Zone

1. Known or suspected problem/existing pollutant source to be addressed by BMP: **Storm Water Runoff/Quality**
2. Target audience: **Citizens**
3. Description of BMP: **25 foot minimum vegetative buffer zones**
4. Measurable Goal(s): **Require new developments to provide buffer zones to protect "blue line" streams and creeks identified on USGS 7.5 minute topographic maps.**
5. Schedule:
 - a. Interim Milestone Dates (if applicable)
 - b. Implementation Date: **July 2002**
 - c. Frequency of actions (if applicable)
 - d. Month/Year of each action (if applicable)
6. Person (position) responsible for overall management and implementation of the BMP: **City of Auburn Planning Commission**
7. Rational for selecting this BMP:

Buffer zones provide for stream bank protection by restricting the type of land disturbance in and around streams. They also allow a location for stream bank vegetation to grow providing shade and habitat for aquatic life.

C. Best Management Practice (BMP) # 2: Detention Pond Inspection

1. Known or suspected problem/existing pollutant source to be addressed by BMP: Storm Water Runoff/Quality
2. Target audience: Private and Public Detention Pond Owners
3. Description of BMP: Annual inspections of exiting detention ponds.
4. Measurable Goal(s): Inspect private and public storm water detention ponds (on record with Public Works) annually
5. Schedule:
 - a. Interim Milestone Dates (if applicable)
 - b. Implementation Date: **1997**
 - c. Frequency of actions: **Annually**
 - d. Month/Year of each action: (if applicable)
6. Person (position) responsible for overall management and implementation of the BMP: **Tim Logiotatos/Public Works**
7. Rational for selecting this BMP:

Existing detention ponds need periodic inspections to maintain proper operation. Upon inspection, the owner of the pond is notified of corrective action needed. Because vast quantities of storm water are passed through these detention ponds every year, regular inspections identify potential problems before they create major environmental damage.

Appendix F

Pollution Prevention/Good Housekeeping for Municipal Operations

40 CFR Part 122.34(b)(6) Requirement: You must develop and implement an operation and maintenance program that includes training component and has the ultimate goal of preventing or reducing pollutant runoff from municipal operations.

A. Best Management Practice (BMP) # 1: Construction Site Management Training

1. Known or suspected problem/existing pollutant source to be addressed by BMP: **Storm Water Runoff/Quality**
2. Target audience: **Public Works Employees**
3. Description of BMP: **Construction Site Management Training**
4. Measurable Goal(s): **Develop and implement training that provides the Public Works department the guidance on how to implement site control measures on all municipal projects.**
5. Schedule:
 - a. Interim Milestone Dates (if applicable)
 - b. Implementation Date: **2003**
 - c. Frequency of actions: **Annual**
 - d. Month/Year of each action (if applicable)
6. Person (position) responsible for overall management and implementation of the BMP: **Tim Logiotatos/Public Works Department**
7. Rational for selecting this BMP:

Providing training to employees will allow the City to better control runoff from municipal construction project sites. Training of construction design personnel will help to develop the skills necessary to choose and implement the most effective Best Management Practices (BMPs).

B. Best Management Practice (BMP) # 2: Spill Response and Prevention Training

1. Known or suspected problem/existing pollutant source to be addressed by BMP: **Storm Water Runoff/Quality**
2. Target audience: **Public Works Employees**
3. Description of BMP: **Provide training to public works employees for spill response and prevention**
4. Measurable Goal(s): **Develop and implement training program targeted at spill response and prevention**
5. Schedule:
 - a. Interim Milestone Dates (if applicable)
 - b. Implementation Date: **Develop program 2003**
 - c. Frequency of actions: **Annual training starting in 2004**
 - d. Month/Year of each action: **January - March**
6. Person (position) responsible for overall management and implementation of the BMP: **Tim Logiotatos/Public Works**
7. Rational for selecting this BMP:

Spill prevention training is targeted at public works employees. It will have the most impact when it comes to preventing and controlling spills of non-hazardous materials since the first responders to a spill are typically Public Works work crews. Hazardous materials will be addressed through our agreement with the Opelika Fire Department.

Notes:

For the BMP used to describe the required training component of the O&M program, you should provide the name of the target audience(s). One targeted audience must be the MS4 employees.

The MS4 is not limited to implementing only 2 BMPs for each minimum control measure. If additional BMPs are chosen, then you should attach additional sheets as needed.

Appendix G

City of Auburn Location Map

Appendix H

Lee County Emergency Operations Plan
Emergency Support Function #10 Hazardous Materials

Appendix I

Master Drainage Map & Quarter Section Map Example

Appendix J

ALOA Erosion and Sediment Control Policy

Appendix K

City of Auburn Storm Water Management Manual

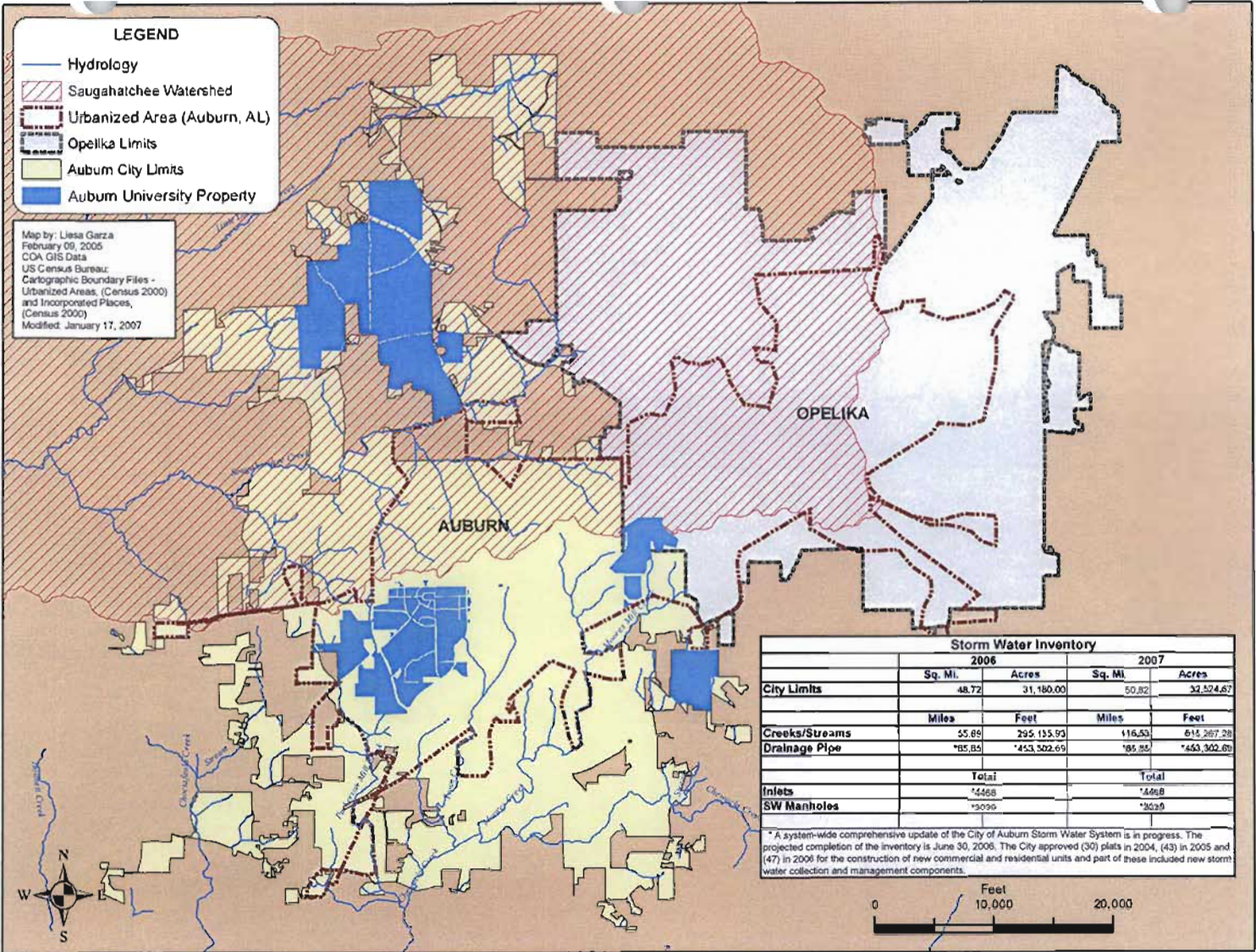
APPENDIX B

URBANIZED AREA MAP

LEGEND

-  Hydrology
-  Saughatchee Watershed
-  Urbanized Area (Auburn, AL)
-  Opelika Limits
-  Auburn City Limits
-  Auburn University Property

Map by: Liesa Garza
 February 09, 2005
 CDA GIS Data
 US Census Bureau:
 Cartographic Boundary Files -
 Urbanized Areas, (Census 2000)
 and Incorporated Places,
 (Census 2000)
 Modified: January 17, 2007



Storm Water Inventory				
	2006		2007	
	Sq. Mi.	Acres	Sq. Mi.	Acres
City Limits	48.72	31,180.00	50.82	32,524.67
	Miles	Feet	Miles	Feet
Creeks/Streams	55.88	295,135.93	116.53	615,267.28
Drainage Pipe	*85.85	*453,302.69	*85.85	*453,302.69
	Total		Total	
Inlets		*4468		*4468
SW Manholes		*3039		*3039

* A system-wide comprehensive update of the City of Auburn Storm Water System is in progress. The projected completion of the inventory is June 30, 2006. The City approved (30) plats in 2004, (43) in 2005 and (47) in 2006 for the construction of new commercial and residential units and part of these included new storm water collection and management components.



APPENDIX C

NEWSPAPER PUBLICATIONS LISTING

<i>Publication Date by Month</i>	<i>Publication Date</i>	<i>Title</i>	<i>Editorial</i>	<i>Publication Source</i>
	10/16/2005	STATE'S RIVERS IN FAST DECLINE	<input type="checkbox"/>	MONTGOMERY ADVERTISER
	10/20/2005	Auburn, Piedmont Conservation Groups Join Forces	<input type="checkbox"/>	Opelika-Auburn News
<i>January 2006</i>				
	1/4/2006	AUBURN 2006	<input type="checkbox"/>	Opelika-Auburn News
	1/4/2006	WATKINS: GROWTH SHOWS NO SIGNS OF SLOWING DOWN	<input type="checkbox"/>	Opelika-Auburn News
	1/8/2006	A GIFT OF THE DEVELOPMENT RIGHTS	<input type="checkbox"/>	Opelika-Auburn News
	1/10/2006	CITY MUST ADOPT HIGHER ENVIRONMENTAL STANDARDS OR EVERYONE WILL PAY FOR IT	<input checked="" type="checkbox"/>	Opelika-Auburn News
	1/13/2006	ORDINANCE THAT CONTAINS STRONG WATER PROTECTION STANDARDS IS NEEDED	<input checked="" type="checkbox"/>	Opelika-Auburn News
<i>February 2006</i>				
	2/17/2006	TREES FREE TO PUBLIC FOR ARBOR DAY IN AUBURN	<input type="checkbox"/>	Opelika-Auburn News
	2/21/2006	TAKING ROOT: Local Tree Specialists Give Tips on Planting	<input type="checkbox"/>	Opelika-Auburn News
<i>March 2006</i>				
	3/1/2006	Erosion and Sediment Control Workshop	<input type="checkbox"/>	Open Line
	3/1/2006	Keep Auburn Beautiful Committee Roadside Cleanup Event	<input type="checkbox"/>	Open Line
	3/5/2006	GROUP CLEANS UP COUNTY CREEKS	<input type="checkbox"/>	Opelika-Auburn News
<i>April 2006</i>				
	4/1/2006	AUBURN CITYFEST 2006	<input type="checkbox"/>	Open Line
	4/1/2006	EARTH WEEK 2006	<input type="checkbox"/>	Open Line
	4/1/2006	Household Hazardous Waste Collection Day 2006	<input type="checkbox"/>	Open Line
	4/10/2006	EARTH DAY EVENTS KICK OFF	<input type="checkbox"/>	Opelika-Auburn News

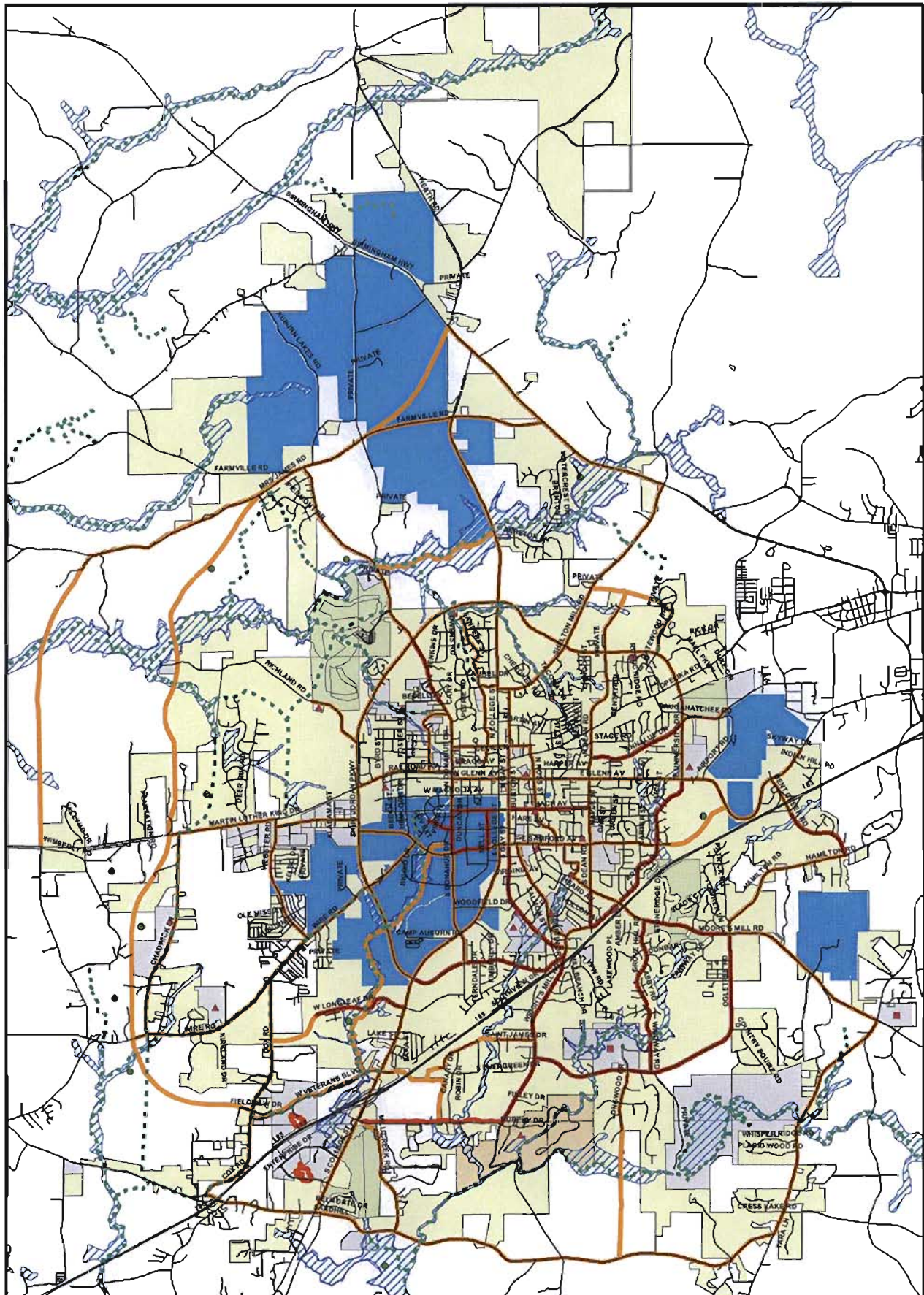
<i>Publication Date by Month</i>	<i>Publication Date</i>	<i>Title</i>	<i>Editorial</i>	<i>Publication Source</i>
	4/20/2006	EARTH DAY EVENTS HAS AUBURN UNIVERSITY THINKING GREEN	<input type="checkbox"/>	Opelika-Auburn News
<i>June 2006</i>				
	6/19/2006	RAIN FINALLY IN FORECAST FOR AREA THIS WEEK	<input type="checkbox"/>	Opelika-Auburn News
<i>July 2006</i>				
	7/1/2006	COUNCIL ADOPTS NEW STREAM BUFFER REQUIREMENTS	<input type="checkbox"/>	OPEN LINE
<i>August 2006</i>				
	8/27/2006	ERNESTO BECOMES HURRICANE	<input type="checkbox"/>	Opelika-Auburn News
	8/29/2006	KATRINA - ONE YEAR LATER	<input type="checkbox"/>	Opelika-Auburn News
<i>October 2006</i>				
	10/13/2006	SEVERE WEATHER POUNDS COUNTY	<input type="checkbox"/>	Opelika-Auburn News
	10/22/2006	NEW RECYCLING PROGRAM TRIMMING FAT FROM CITY'S WATER SYSTEM	<input type="checkbox"/>	Opelika-Auburn News
<i>November 2006</i>				
	11/1/2006	CELEBRATE AUBURN RECYCLES DAY NOVEMBER 14	<input type="checkbox"/>	Open Line
	11/1/2006	SEWER SYSTEM GREASE AND OUR ENVIRONMENT	<input type="checkbox"/>	Open Line
	11/1/2006	KEEP STORM DRAINS CLEAR	<input type="checkbox"/>	Open Line
	11/14/2006	RECYCLING CELEBRATION TODAY IN AUBURN	<input type="checkbox"/>	Opelika-Auburn News
	11/15/2006	AREA UNDER SEVERE WEATHER GUN TODAY	<input type="checkbox"/>	Opelika-Auburn News
	11/16/2006	LEE RESIDENTS ESCAPE BRUNT OF STORMS	<input type="checkbox"/>	Opelika-Auburn News
	11/16/2006	SEVERE WEATHER	<input type="checkbox"/>	Opelika-Auburn News
	11/29/2006	AU STUDENTS DESIGN ENVIRO-FRIENDLY ROOF FOR HALEY CENTER	<input type="checkbox"/>	Opelika-Auburn News

December 2006

<i>Publication Date by Month</i>	<i>Publication Date</i>	<i>Title</i>	<i>Editorial</i>	<i>Publication Source</i>
	12/1/2006	STORMWATER RUNOFF	<input type="checkbox"/>	OPEN LINE
	12/5/2006	AUBURN TO ADDRESS WATERSHED ISSUE	<input type="checkbox"/>	Opelika-Auburn News
	12/19/2006	E.coli found in Saugahatchee	<input type="checkbox"/>	Opelika-Auburn News
	12/20/2006	WATERSHEDS SHOULD BE TESTED MORE OFTEN	<input checked="" type="checkbox"/>	Opelika-Auburn News
<i>January 2007</i>				
	1/9/2007	WAITING FOR ANSWERS: ADEM Delays E.coli Testing on Saugahatchee Creek	<input type="checkbox"/>	Opelika-Auburn News
	1/23/2007	ADEM TESTS ON SAUGAHATCHEE UNDERWAY	<input type="checkbox"/>	Opelika-Auburn News
<i>February 2007</i>				
	2/1/2007	COUNTDOWN TO CITYFEST 2007	<input type="checkbox"/>	Opelika-Auburn News
	2/9/2007	AUBURN CITY COUNCIL DESERVES KUDOS FOR HELPING STREAMS	<input checked="" type="checkbox"/>	Opelika-Auburn News
	2/16/2007	WATER QUALITY MONITORING CLASS OFFERED SATURDAY	<input type="checkbox"/>	Opelika-Auburn News
	2/16/2007	ADEM AWAITS LAB WORK ON CREEK'S E.COLI TEST	<input type="checkbox"/>	Opelika-Auburn News

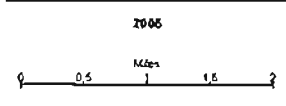
APPENDIX D

GREEN SPACE AND GREEN WAY MASTER PLAN



- LEGEND**
- Green Areas
 - Greenways
 - ▲ Parks
 - Future Parks
 - Streets
 - Bike Paths
 - Existing
 - Proposed
 - ▨ Flood Plain
 - ▨ City Property
 - ▨ Golf Courses
 - ▨ Cherokee State Park
 - ▨ Auburn University Property
 - ▨ City Limits
 - ▨ Golf Course

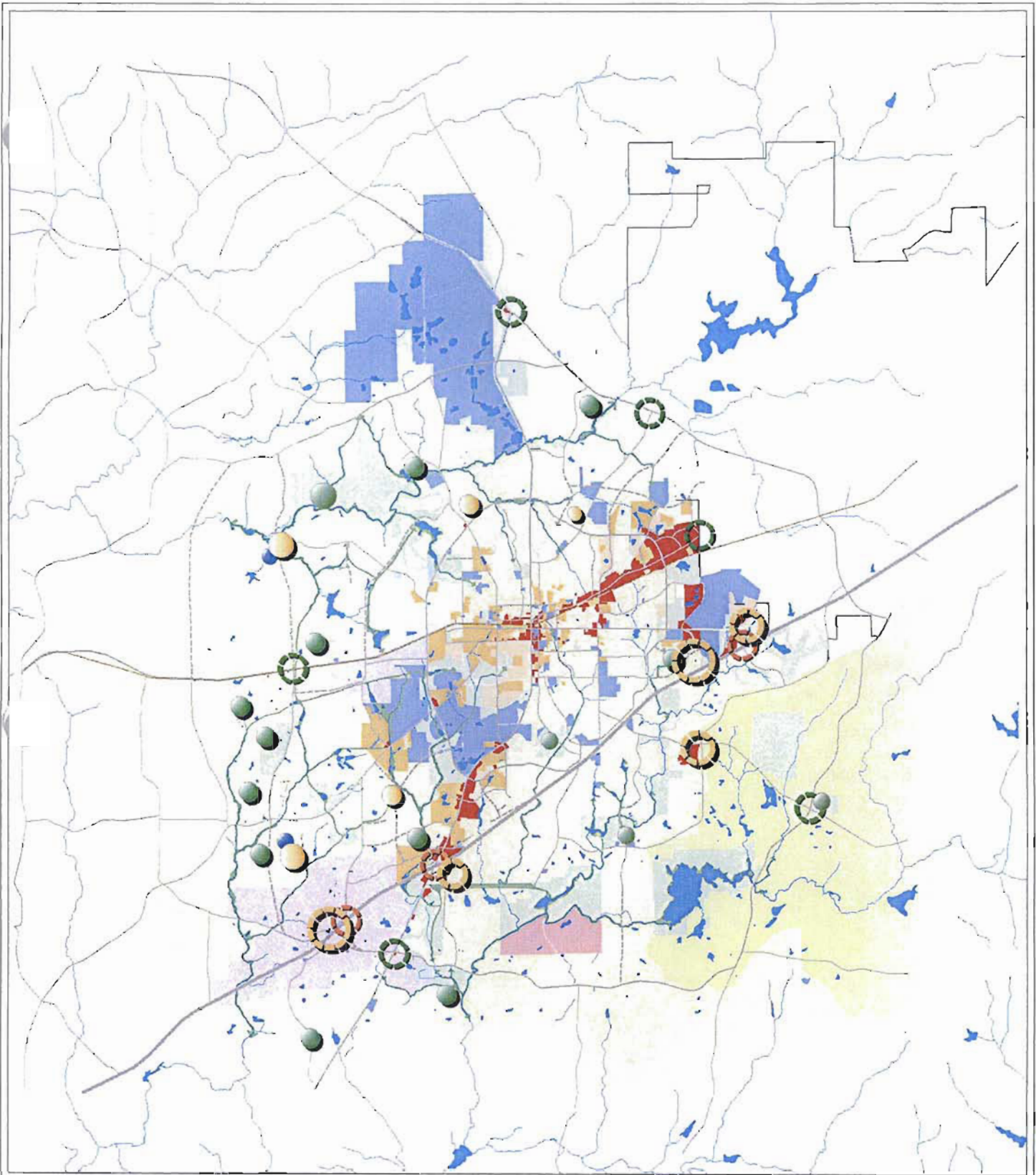
City of Auburn
Green Space and Green Way
Master Plan



Map Date: 2/29/2005
By: Linda Garcia
Public Works, Mapping Assistant
Map 2004 GIS Data

APPENDIX E

FUTURE LAND USE PLAN



Future Land Use Plan
AUBURN, ALABAMA



K|P|S
GROUP

LEGEND

- | | | |
|--|---|--|
|  OFFICE |  INDUSTRIAL |  MINOR GATEWAY |
|  COMMERCIAL MIXED USE |  EXTRACTION |  MAJOR GATEWAY |
|  LARGE LOT RESIDENTIAL |  UTILITY |  PROPOSED ACTIVITY CENTER |
|  RESIDENTIAL |  PARKS, RECREATION, |  PROPOSED ACTIVITY CENTER |
|  HIGH DENSITY RESIDENTIAL |  GREENWAY |  PROPOSED SCHOOLS |
|  INSTITUTIONAL/ CIVIC |  PROPOSED ROADWAY IMPROVEMENTS |  PROPOSED PARKS |